

TREC – Partner in Saxony: NEU e.V.



Kastoria, March 4, 2013.

Region of Saxony



Click on a location in the map or choose from the list below

© MyGermanCity.com

- **Area:** 18,420 km²
5,2% of Germany
- **Inhabitants:** 4,149,477
5.1% of Germany
- **GDP 2010:** 95 Bill. €
3.8% of Germany

Energy and Environment Cluster (NEU e.V.) Objectives



- **networking in order to**
 - develop regional & international cooperation
 - encourage knowledge & technology transfer
 - initiate and realise joint projects
 - create value & innovation
 - strengthen the city and region of Leipzig as a considerable location in the field of energy & environmental engineering
- **special interest in intensifying international networking**



Energy and Environment Cluster (NEU e.V.) Roadmap & Milestones



2005 – „Cluster strategy“: shaping fields of activities = clusters (media, energy & environment, mobility, ...)

2006 – setting up responsibilities: networkers → get companies, R&D and NGOs in the fields of activities together

Since 2007 – annual meetings of the Energy & Environment Cluster – conferences with 170 participants (network events)

2008 – setting up working groups = cluster teams

2010 – PR, homepage

2011 – founding a registered association: NEU e.V.

2012 – benchmarking (goals of the cluster strategy), written documentation

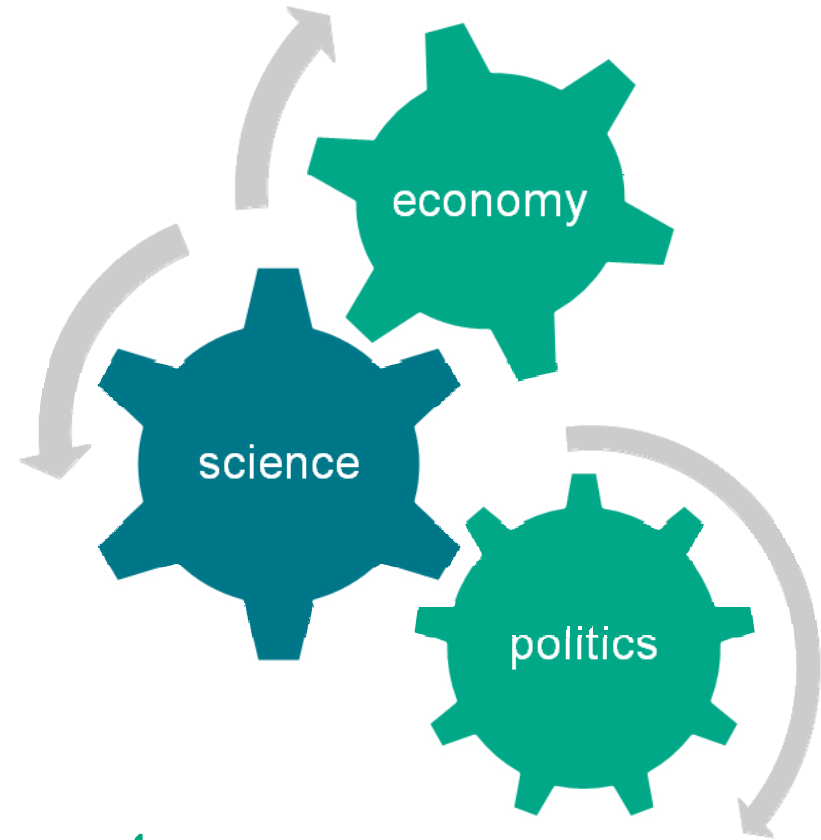


Energy and Environment Cluster (NEU e.V.)

Key Figures

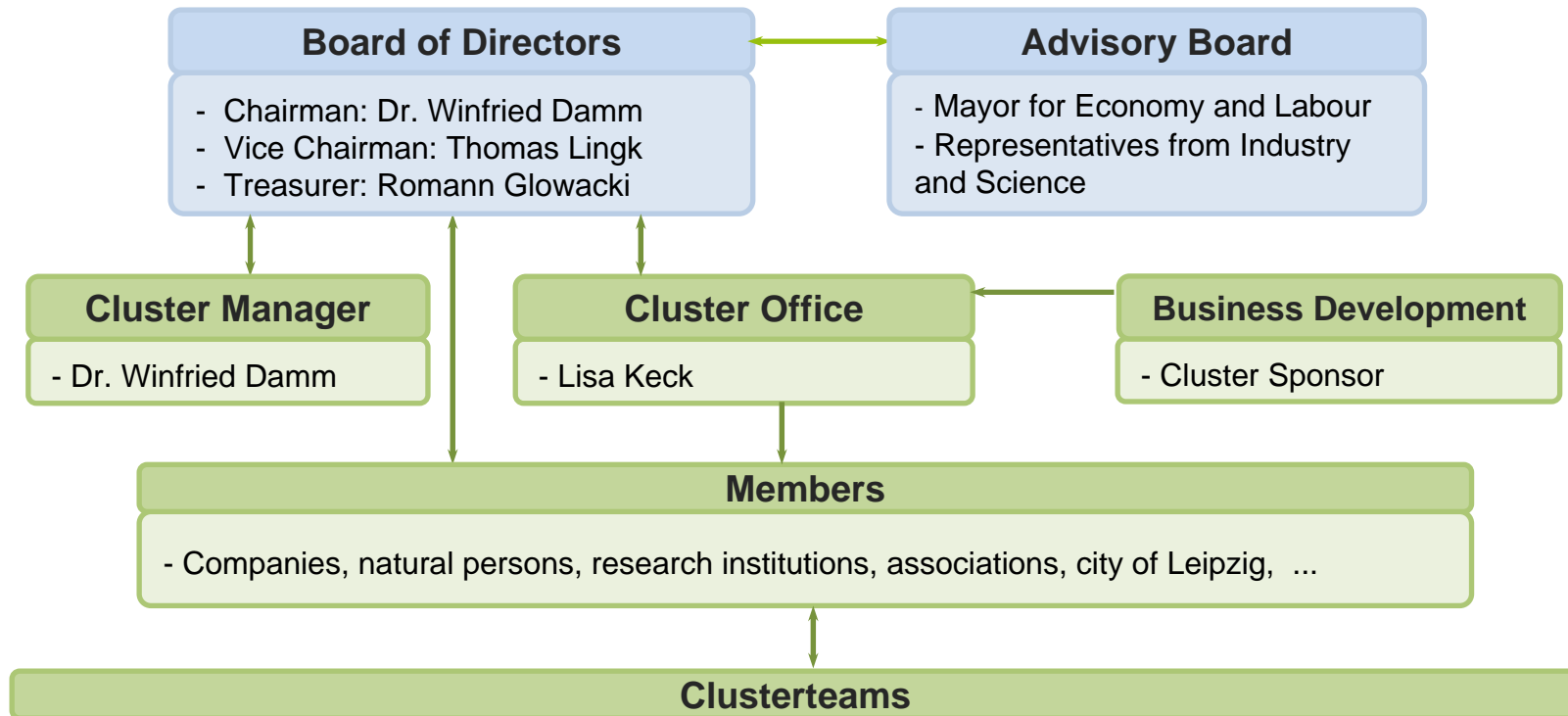


- **Established in January 2011**
- **Focus: city and region of Leipzig**
- **50 members – network of**
 - companies, entrepreneurs, mainly small & medium-sized enterprises
 - research & development institutions
 - government agencies and consultancy
- **450 non-committed cluster participants**



Energy and Environment Cluster (NEU e.V.)

Founding a registered association



Energy and Environment Cluster (NEU e.V.)

The Association's Cluster Teams

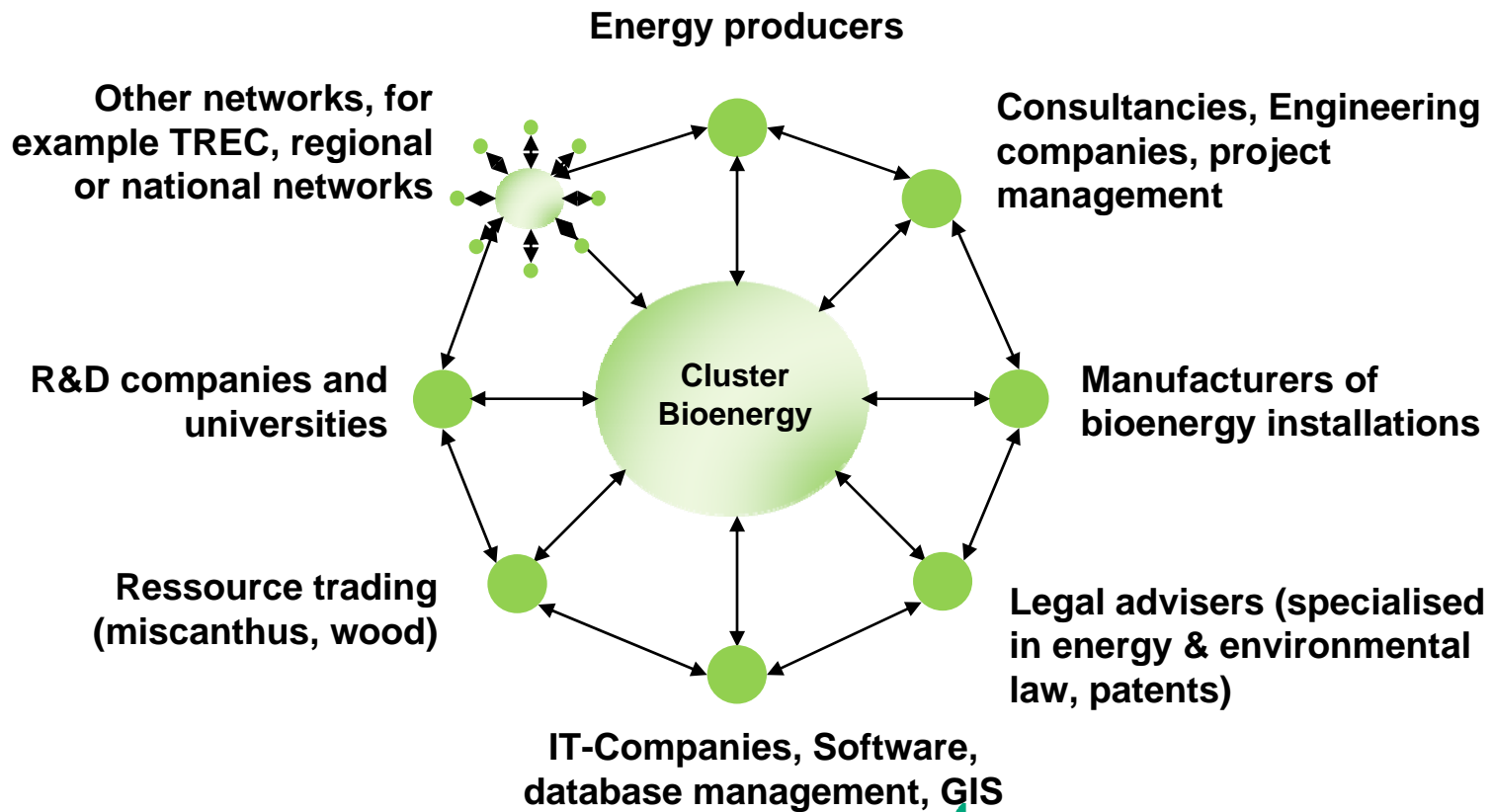


- **Interdisciplinary eco-cluster: covers a broad range of topics in the area of renewable energy and environment**
- **Further topics to be added**

| Clusterteams | | |
|-----------------------------|--------------|---------------------|
| Bioenergy | E-Mobility | Energy Efficiency |
| Trade and Service Companies | Solar Energy | Water / Waste Water |



Energy and Environment Cluster (NEU e.V.) Cluster Team Bioenergy



Selected Projects: HTC - Hydro Thermal Carbonisation



Input

Municipal Bio Waste
Residues from
Biogasproduction
Waste from food ind.
Sewage sludge

Conversion

Hydrothermal Process
180 - 250 ° C
10 - 40 bar
2 - 6 h

Products

Bio Coal
Properties similar to
lignite

Selected Projects: HTC - Hydro Thermal Carbonisation

Partners:

Municipal waste treatment company (dump)

Plant engineering company

Research institution (DBFZ)

Goals:

2.500 t/a pilotplant

Optimisation of the Technology

Adaptation on sewage sludge

Utilization of bio coal (energetic and material)





Selected Projects: Biogas from special Feedstocks

Partners:

Plant Engineering and Construction Companies

Research Institution (DBFZ)

Goals:

Making Biogas from Waste from Slaughterhouses and Food Industry

Using Manure and Animal Exkrements as Feedstock





Selected Projects: Flexible Biogas Plants

Partners:

Plant Engineering and Construction Companies

Research Institution (DBFZ)

Goals:

Enable Demand Driven Energy Supply from Biogas Installations

Gas Cleaning, Upgrading and Feeding it into the Gas Grid (Energy Storage)

Control and flexibilise the Process Biology



Selected Projects: Internationalisation - TREC

Current Partners:

North-West Regional Development Agency & Technology Transfer Center, Cluj-Napoca (RO);

Centre for Research and Technology Hellas & Waste Management of Western Macedonia, Western Macedonia (GR);

DIADYMA S.S., Waste Management of Western Macedonia S.S.

Deutsches Biomasseforschungszentrum, Saxony (GE)

Potential Partners (in closer contact):

Poland, 2 Clusters

Slowakia, 1 Cluster, 1 Network

Hungary, Czech Republic, Moldawia



Getting involved



We look forward to working with international partners

Further information on www.energiemetropole-leipzig.de

Please contact us: TREC@energiemetropole-leipzig.de



**Researching the energy of the future –
come and join us!**

Contact

Romann Glowacki
romann.glowacki@dbfz.de
Tel. +49 (0)341 2434 – 464

Christiane Hennig
christiane.hennig@dbfz.de
Tel. +49 (0)341 2434 – 535

**DBFZ Deutsches
Biomasseforschungszentrum
gemeinnützige GmbH**

Torgauer Straße 116
D-04347 Leipzig
Phone: +49 (0)341 2434 – 112
E-Mail: info@dbfz.de
www.dbfz.de